

Monthly Weather Summary in Thailand

In May 2021, hot weather still persisted over Thailand especially in upper Thailand with very hot weather in some places. The average temperature in this month was above normal in every parts especially in the northern and northeastern parts that was 1.2 °C higher than normal and the average temperature over Thailand was 0.8 °C above normal. For rainfall, rainfall was observed in majority areas of the country in the middle of the month due to the influence of the southwest monsoon that prevailed over the Andaman Sea, Thailand and the Gulf of Thailand, causing many areas of Thailand had rain especially along the southern west coast that experience successive rain which considered as the beginning of the rainy season on the May 15. However, the amount and distribution of rain in upper Thailand was uneven causing below normal rainfall in majority areas. In southern part, intermittent abundant rain was found in southern part due to the influence of the easterly wind prevailing over the Gulf of Thailand, the South and the Andaman Sea during the first half of the month after that it changed to the southwest monsoon prevailing over the Andaman Sea, southern part and the Gulf of Thailand. The total rainfall was lower than normal in most parts i.e. northern part 84.3 mm (47%), northeastern 47.8 mm (26%), central part 63.1 mm (37%), eastern part 37.6 mm (17%) and southern part (east coast) 21.1 mm (15%) while it was inversely above normal in the southern part (west coast) 18.9 mm (6%). The average rainfall over the whole areas of Thailand was 25% lower than normal.

1 – 10 May : The southerly and the southeasterly winds prevailed over upper Thailand almost the period in addition with the passage of the westerly trough from Myanmar over upper northern part during May 5-6 and the high pressure area has extended to cover upper Thailand during the middle of the period and later weakened. These conditions caused rainfall in upper Thailand especially during mid-period that received fairly widespread rain with heavy to very heavy rainfall in some areas and thundershowers in several places. The highest daily rainfall was 113.3 mm at Amphoe Mueang in Mukdahan province on May 1. Thundershower with gusty wind occurred at Mae Hong Son, Chiang Mai, Lamphun, Lamphun, Mukdahan, Surin and Amnat Chareon provinces on May 1, at Kamphaeng Phet, Yasothon, Chaiyaphum, Si Sa Ket, Suphan Buri, Lop Buri, Prachinburi and Chachoengsao provinces on May 2, at Chiang Rai, Chiang Mai, Lamphang and Phayao provinces on May 3, at Phichit, Phitsanulok, Khon Kaen, Buriram, Phra Nakhon Si Ayutthaya, Sing Buri, Ratchaburi, Saraburi and Nonthaburi provinces on May 4, at Lamphun, Nakhon Phanom, Udon Thani, Nong Bua Lam Phu, Kalasin, Nakhon Ratchasima, Mahasarakham, Uthai Thani, Nakhon Nayok, Chon Buri and Chanthaburi provinces on May 5, at Tak, Roi et, Chai Nat, Samut Prakan, Samut Sakorn, Samut Songkham, Sa Kaeo, Chon Buri, Rayong and Trat provinces on May 6, at Loei, Ang Thong and Pathum Thani provinces on May 7, at Phrae province on May 8 with flash flooding at Mae Hong Son and Lamphang provinces on May 1. In southern part, with the prevailing of the easterly and the southeasterly winds over the Gulf of Thailand, southern and the Andaman Sea throughout the period caused plentiful of rainfall almost the period especially along the east coast. The maximum daily rainfall of 137.6 mm was found at Agrometeorological station in Yala province on May 6. Thundershower with gusty wind occurred at Prachuap Khiri Khan, Surat Thani and Nakhon Si Thammarat provinces on May 6. However, hot weather persisted in majority areas of upper Thailand with the highest maximum temperature of 39.2 °C at Amphoe Mueang in Mae Hong Son province on May 10.

11 – 20 May : The temperature was relatively increased with hot weather in most areas of upper Thailand with very hot weather in some areas of the northern part. The highest maximum temperature was 41.0° C at Amphoe Mueang in Lamphun province on May 17. However, rainfall was relatively increased due to the effect of the southwesterly and southeasterly winds prevailed over upper Thailand during the first half of the period and the prevailing of the easterly and southeasterly winds over the southern part, the Gulf of Thailand and the Andaman Sea during that time. After that, it changed into the southwest monsoon blowing over the Andaman Sea, Thailand and the Gulf of Thailand which induced increasing in rainfall in the northeastern, central and eastern parts. The heaviest daily rainfall was 120.9 mm at Bang Na Agrometeorological station in Bangkok Metropolis on May 19. Gusty wind and thundershower occurred at Chiang Rai province on May 11, at Phayao and Sakon Nakhon provinces on

May 12, at Nakhon Ratchasima, Roi Et and Ubon Ratchathani provinces on May 14, at Phayao, Chaiyaphum, Nakhon Phanom, Nakhon Ratchasima and Sakon Nakhon provinces on May 15, at Phichit, Nakhon Sawan, Chai Nat, Kanchanaburi, Ang Thong and Prachinburi provinces on May 16, at Chaing Mai, Lampang, Lamphun, Tak and Surin provinces on May 17, at Nan, Loei, Ubon Ratchathani, Amnat Chareon, Mahasarakham and Nakhon Nayok provinces on May 18, at Chaing Rai, Nakhon Phathom, Nonthaburi, Samut Prakan and Chachoengsao provinces on May 19. For southern part, the easterly and southeasterly winds prevailed over the Gulf of Thailand and southern parts during the first half of the period then it changed to the southwest monsoon prevailing over the Andaman Sea, Thailand and the Gulf of Thailand that caused abundant rainfall throughout the period especially along the west coast. The maximum daily rainfall was 107.2 mm at Bacho in Narathiwat province on May 18 with thundershower and gusty wind at Song Khla province on May 11 and at Nakhon Si Thammarat province on May 19.

21 – 31 May : The southwest monsoon prevailed over the Andaman Sea, southern part and the Gulf of Thailand throughout the period and strengthened during the middle of the period in addition with the low pressure trough lay across lower northern, upper central and the northeastern parts during the middle of the period causing abundant rainfall in upper Thailand especially in the northern and northeastern parts that obtained fairly widespread rain with heavy to very heavy rainfall in some areas during mid-period. In the central and eastern parts, most rainfall was mainly observed during the second half of the period with fairly widespread rain and heavy to very heavy rainfall in some places. The highest daily rainfall was 292.6 mm at Ban Huai Chan, Watthana Nakhon in Sa Kaeo province on May 25. Thunderstorm and gusty wind occurred at Chiang Mai, Phitsanulok, Nakhon Phanom, Sakon Nakhon, Surin, Yasothon, Roi Et, Kalasin, Chaiyaphum and Saraburi provinces on May 24, at Udon Thani, Nakhon Ratchasima and Chanthaburi provinces on May 25, at Lamphun and Trat provinces on May 27, at Mae Hong Son, Phayao, Lamphun and Chon Buri provinces on May 28, at Tak province on May 29. Southern part received abundant rainfall almost the period especially along the west coast that obtained widespread rain almost the period with heavy to very heavy rainfall in some areas while scattered to fairly widespread rain was observed along the east coast with heavy rainfall in some places. The maximum daily rainfall of 150.7 mm was recorded at Kapoe in Ranong province on May 25. Thunderstorm and gusty wind occurred at Ranong and Satun provinces on May 21, at Ranong province on May 24, at Surat Thani, Ranong, Phang-nga and Phuket provinces on May 25 and at Nakhon Si Thammarat province on May 26. However, hot weather remained in upper Thailand with very hot weather in some places mainly during early period with the highest maximum temperature of 40.5° C at Amphoe Mueang in Uttaradit province on May 24.

Note : Rainfall, temperatures and natural disasters in this report was updated up to June 4, 2021

Climatological Center
Meteorological Development Bureau
Thai Meteorological Department

Monthly Current Report
Rainfall and Accumulative Rainfall
May 2021

Northern Thailand

Station	Temperature (°c)		Rainfall (mm)		Accumulative rainfall (mm) Since 1 January	
	Mean	Above or below normal	Actual	Above or below normal	Actual	Above or below normal
Chiang Rai	28.1	1.0	118.8	-94.6	289.6	-71.2
Mae Hong Son	30.1	1.2	186.2	11.7	320.6	53.7
Phayao	28.8	1.0	121.9	-57.8	359.6	45.6
Chiang Mai	30.3	2.1	101.8	-60.2	281.7	31.5
Tha Wang Pha	28.7	0.6	90.8	-92.2	472.3	137.3
Nan	29.6	1.0	106.1	-71.2	342.4	16.5
Lamphun	30.1	1.4	64.8	-90.0	176.2	-43.9
Lampang	30.4	1.6	40.2	-120.2	228.7	-32.0
Mae Sariang	29.4	1.0	93.7	-68.6	319.7	90.5
Phrae	30.3	1.3	168.7	-9.4	353.4	51.0
Uttaradit	31.4	1.6	56.2	-173.8	245.7	-98.7
Bhumibol Dam	30.7	1.5	87.5	-110.1	384.8	90.5
Tak	30.7	1.1	135.2	-39.7	514.6	259.2
Mae Sot	29.6	1.7	89.7	-84.5	183.5	-60.9
Umphang	26.6	1.0	85.1	-109.9	402.9	42.8
Phitsanulok	30.9	1.0	50.7	-120.2	357.6	86.9
Lom Sak	29.3	0.7	67.2	-83.6	339.4	59.7
Phetchabun	29.9	1.1	68.8	-94.0	330.9	22.5
Wichian Buri	30.5	1.1	19.5	-138.6	376.7	57.8
Kamphaeng Phet	30.7	1.5	117.8	-77.7	306.6	6.2
Over the area	29.8	1.2	93.5	-84.3 -47%	329.3	37.1 13%

NOTES : 1) Mean temperature is the average of daily dry-bulb temperature
2) "T" is trace, rainfall amount less than 0.1 mm.
3) "blank" is incomplete data.
4) Temperature and rainfall are preliminary data.

Northeastern Thailand

Station	Temperature (°c)		Rainfall (mm)		Accumulative rainfall (mm) Since 1 January	
	Mean	Above or below normal	Actual	Above or below normal	Actual	Above or below normal
Nong Khai	30.9	2.3	52.0	-172.9	321.9	-51.8
Loei	28.7	1.0	65.2	-134.1	422.7	59.1
Udon Thani	30.1	1.2	167.3	-31.2	399.4	48.8
Nakhon Phanom	30.2	1.8	238.9	-18.2	417.4	-34.9
Sakon Nakhon	29.8	1.4	91.2	-136.4	350.9	-61.5
Mukdahan	30.4	1.6	350.4	150.9	504.1	168.3
Khon Kaen	29.8	0.9	75.9	-92.8	325.4	-0.4
Kosum Phisai	30.5	1.2	130.7	-30.8	314.6	-6.2
Roi Et	30.6	1.6	67.5	-118.6	268.7	-57.3
Chaiyaphum	30.2	1.3	124.8	-15.4	277.9	-25.0
Ubon Ratchathani	30.4	1.4	127.7	-80.9	230.3	-113.0
Tha Tum	29.5	0.0	189.7	17.4	317.0	-7.4
Surin	29.9	1.1	240.6	60.8	434.3	98.5
Nakhon Ratchasima	29.8	0.7	88.2	-65.9	350.9	63.2
Chok Chai	29.8	1.0	88.2	-60.8	245.5	-41.1
Nang Rong	29.2	0.4	130.0	-36.6	505.6	185.2
Over the area	30.0	1.2	139.3	-47.8 -26%	355.4	14.0 4%

NOTES : 1) Mean temperature is the average of daily dry-bulb temperature
2) "T" is trace, rainfall amount less than 0.1 mm.
3) "blank" is incomplete data.
4) Temperature and rainfall are preliminary data.

Monthly Current Report
Rainfall and Accumulative Rainfall
May 2021

Central Thailand

Station	Temperature (°c)		Rainfall (mm)		Accumulative rainfall (mm) Since 1 January	
	Mean	Above or below normal	Actual	Above or below normal	Actual	Above or below normal
Nakhon Sawan	31.3	1.3	63.8	-86.9	251.9	-11.8
Bua Chum	30.4	1.1	74.1	-62.1	266.2	-13.0
Lop Buri	30.9	1.3	36.7	-110.4	199.9	-73.4
Suphan Buri	31.0	1.2	149.4	35.1	356.5	163.6
Thong Pha Phum	28.9	0.8	65.9	-161.6	314.2	-83.3
Kanchanaburi	30.4	0.7	193.6	48.3	343.8	69.5
Bangkok Airport	30.3	0.5	113.0	-94.6	326.4	-30.5
Bangkok Metropolis	30.6	0.7	175.7	-72.0	465.2	50.7
Over the area	30.5	1.0	109.0	-63.1 -37%	315.5	8.9 3%

Eastern Thailand

Station	Temperature (°c)		Rainfall (mm)		Accumulative rainfall (mm) Since 1 January	
	Mean	Above or below normal	Actual	Above or below normal	Actual	Above or below normal
Prachin Buri	30.7	1.4	87.8	-143.2	315.8	-106.6
Kabin Buri	29.5	0.6	110.9	-81.4	411.7	35.2
Aranyaprathet	30.0	0.8	116.9	-51.4	403.5	64.1
Chon Buri	30.4	0.6	138.4	-36.9	410.2	89.1
Ko Sichang	29.2	-0.4	112.5	-21.9	199.3	-88.6
Pattaya	29.4	0.2	113.2	-35.1	360.4	64.9
Sattahip	29.7	0.1	364.6	192.7	805.4	450.8
Rayong	29.7	0.0	190.0	-8.6	414.0	6.3
Chanthaburi	29.3	1.0	217.4	-175.1	704.9	60.2
Khlong Yai	28.5	0.3	411.6	-15.1	760.0	-90.6
Over the area	29.6	0.4	186.3	-37.6 -17%	478.5	48.4 11%

- NOTES :
- 1) Mean temperature is the average of daily dry-bulb temperature
 - 2) "T" is trace, rainfall amount less than 0.1 mm.
 - 3) "blank" is incomplete data.
 - 4) Temperature and rainfall are preliminary data.

Monthly Current Report
Rainfall and Accumulative Rainfall
May 2021

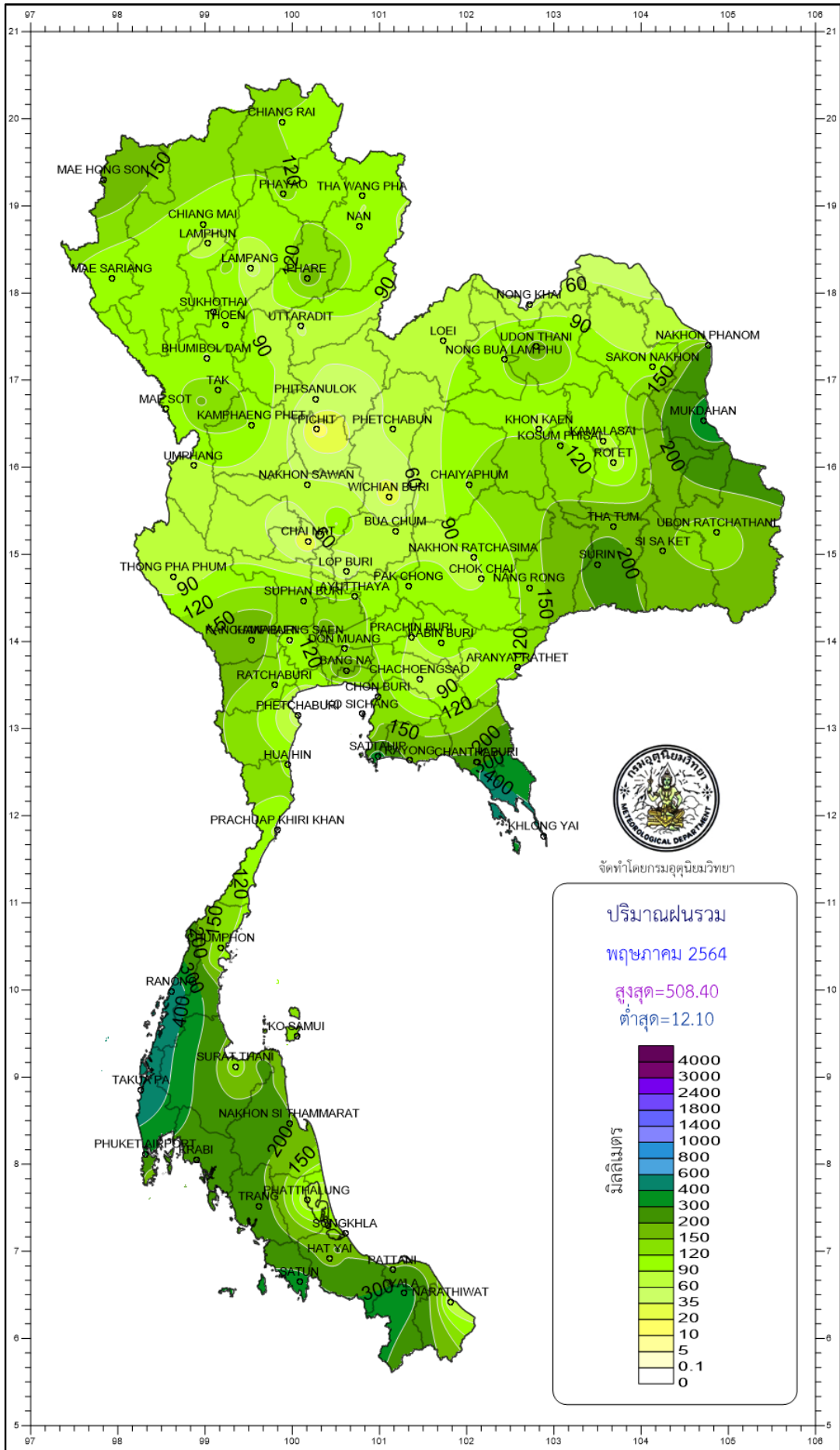
Southern Thailand, east coast

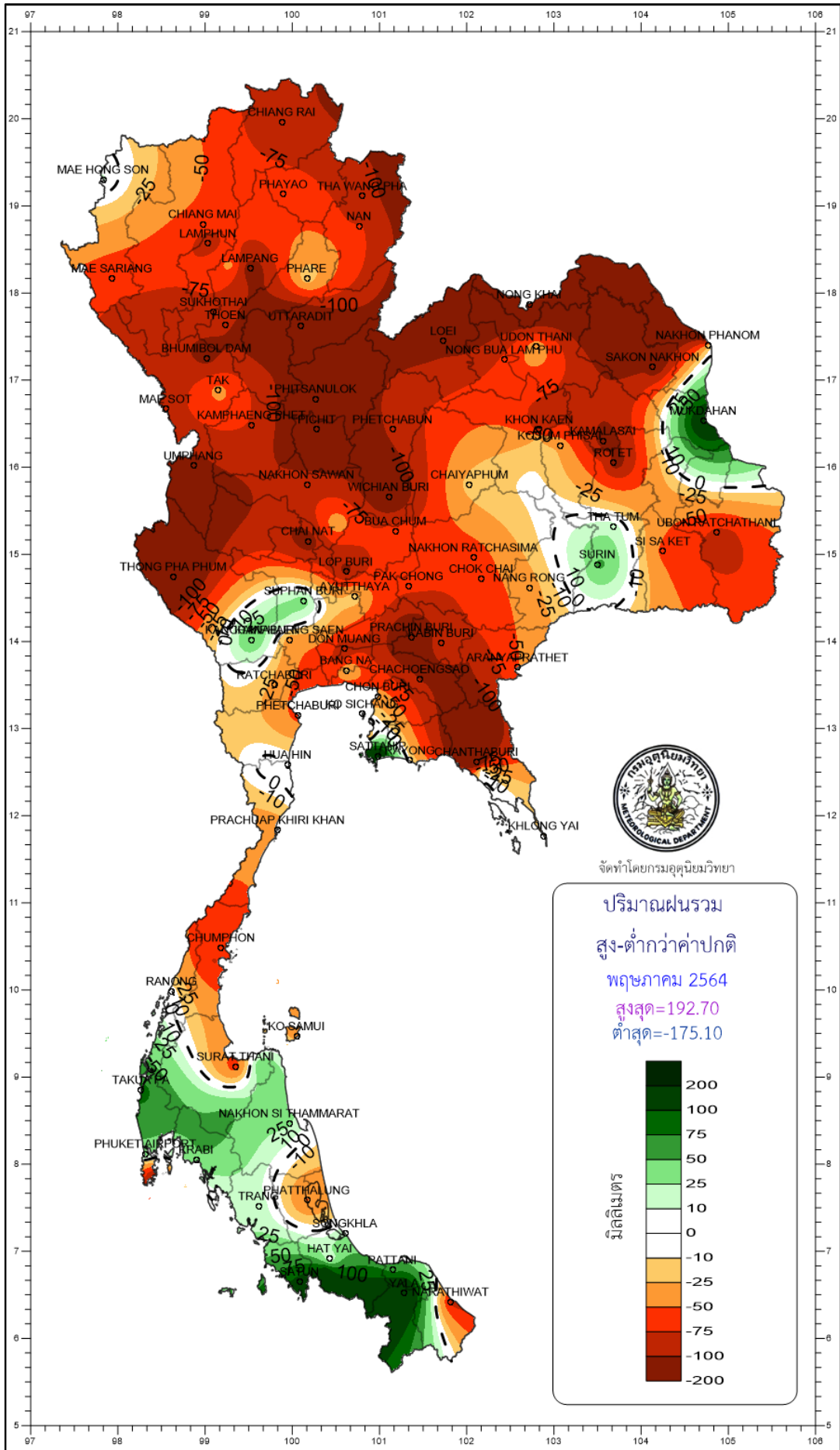
Station	Temperature (°c)		Rainfall (mm)		Accumulative rainfall (mm) Since 1 January	
	Mean	Above or below normal	Actual	Above or below normal	Actual	Above or below normal
Phetchaburi	30.0	0.6	39.5	-60.0	113.6	-71.2
Hua Hin	30.0	0.7	107.1	-1.8	196.1	-40.2
Prachuap Khiri Khan	29.8	0.9	85.0	-41.9	254.7	-45.7
Chumphon	28.4	0.4	126.1	-64.7	282.0	-195.9
Surat Thani	27.9	0.2	113.7	-64.3	300.1	-24.4
Ko Samui	29.3	0.4	124.5	-31.4	269.6	-190.8
Nakhon Si Thammarat	28.5	0.3	202.7	28.9	584.2	0.1
Songkhla	28.9	0.1	139.9	20.3	409.8	32.0
Hat Yai Airport	27.8	0.0	146.6	-1.1	500.6	81.0
Pattani Airport	28.4	0.2	203.2	65.7	457.4	113.0
Narathiwat	28.8	0.6	60.6	-81.5	405.1	-82.5
Over the area	28.9	0.4	122.6	-21.1 -15%	343.0	-38.7 -10%

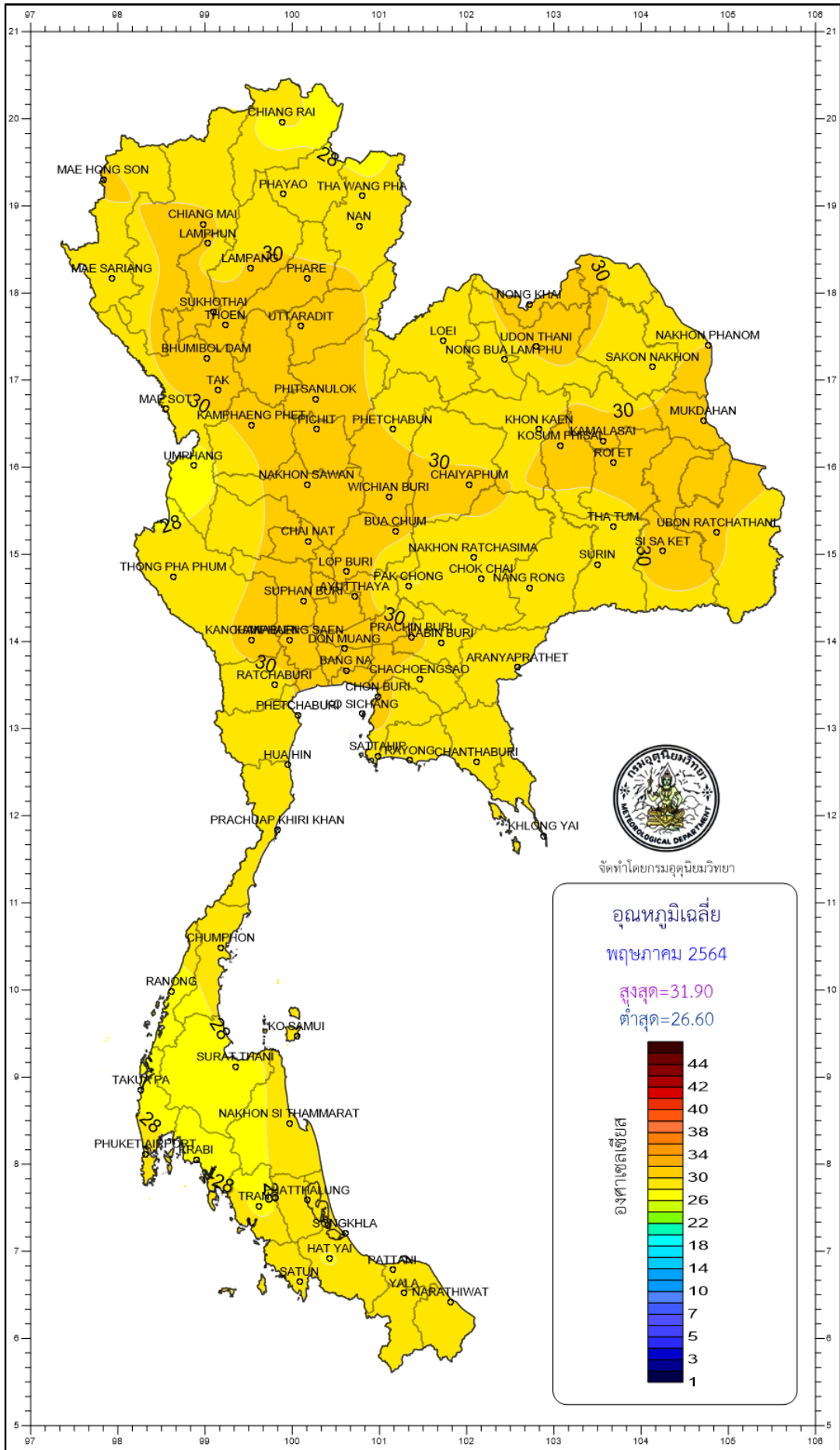
Southern Thailand, west coast

Station	Temperature (°c)		Rainfall (mm)		Accumulative rainfall (mm) Since 1 January	
	Mean	Above or below normal	Actual	Above or below normal	Actual	Above or below normal
Ranong	27.8	0.1	493.4	-3.2	748.8	8.4
Takua Pa	27.8	-0.1	508.4	70.9	1044.6	202.0
Phuket	29.4	0.6	163.2	-96.3	495.0	-35.1
Phuket Airport	28.6	0.2	316.3	34.8	743.0	143.8
Ko Lanta	28.6	-0.1	239.9	-4.9	526.0	66.8
Trang Airport	27.9	0.2	237.0	19.5	512.5	18.6
Satun	28.2	0.1	344.7	111.4	711.6	83.3
Over the area	28.3	0.1	329.0	18.9 6%	683.1	69.7 11%

- NOTES :
- 1) Mean temperature is the average of daily dry-bulb temperature
 - 2) "T" is trace, rainfall amount less than 0.1 mm.
 - 3) "blank" is incomplete data.
 - 4) Temperature and rainfall are preliminary data.

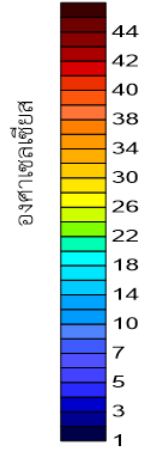




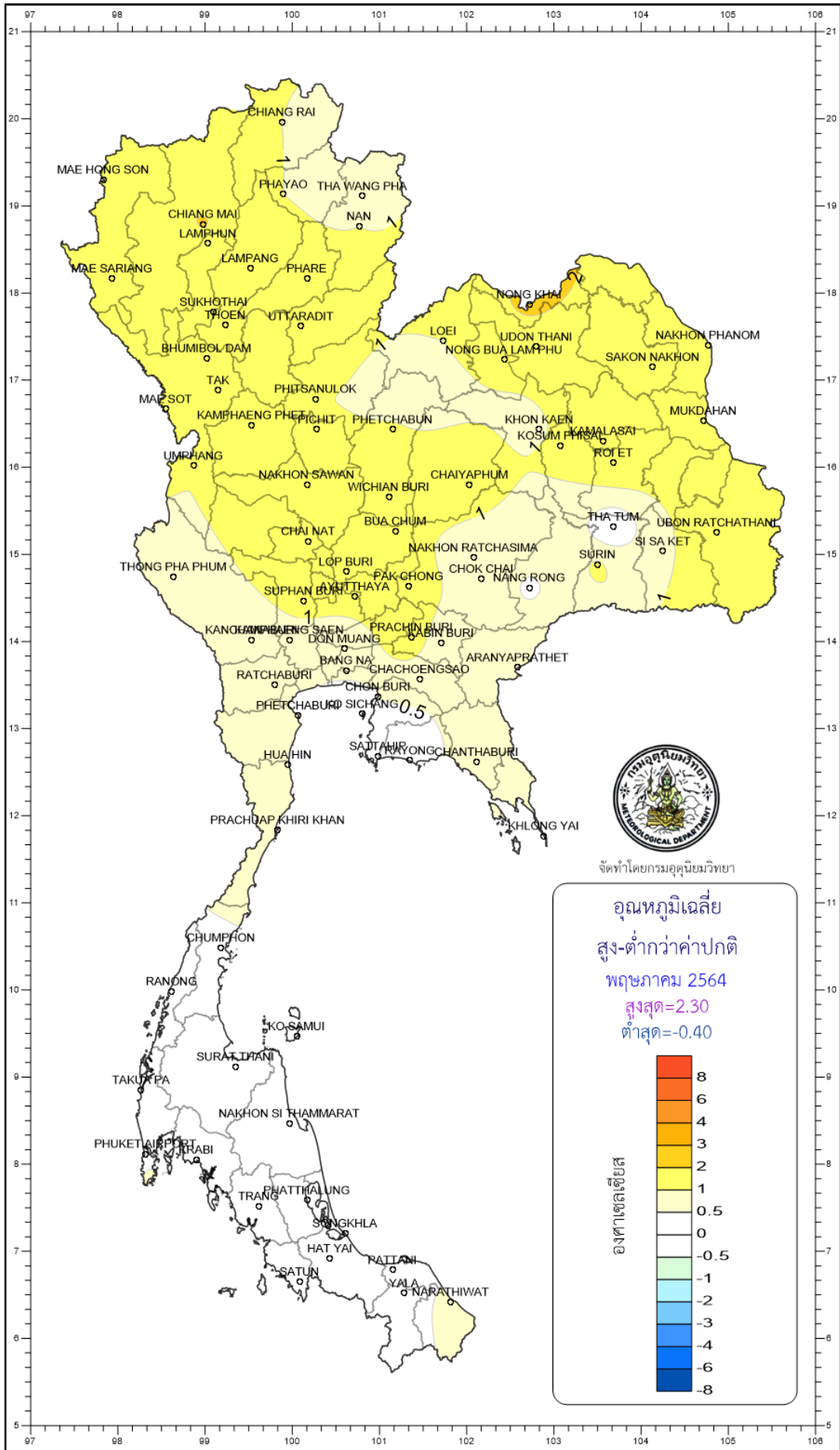


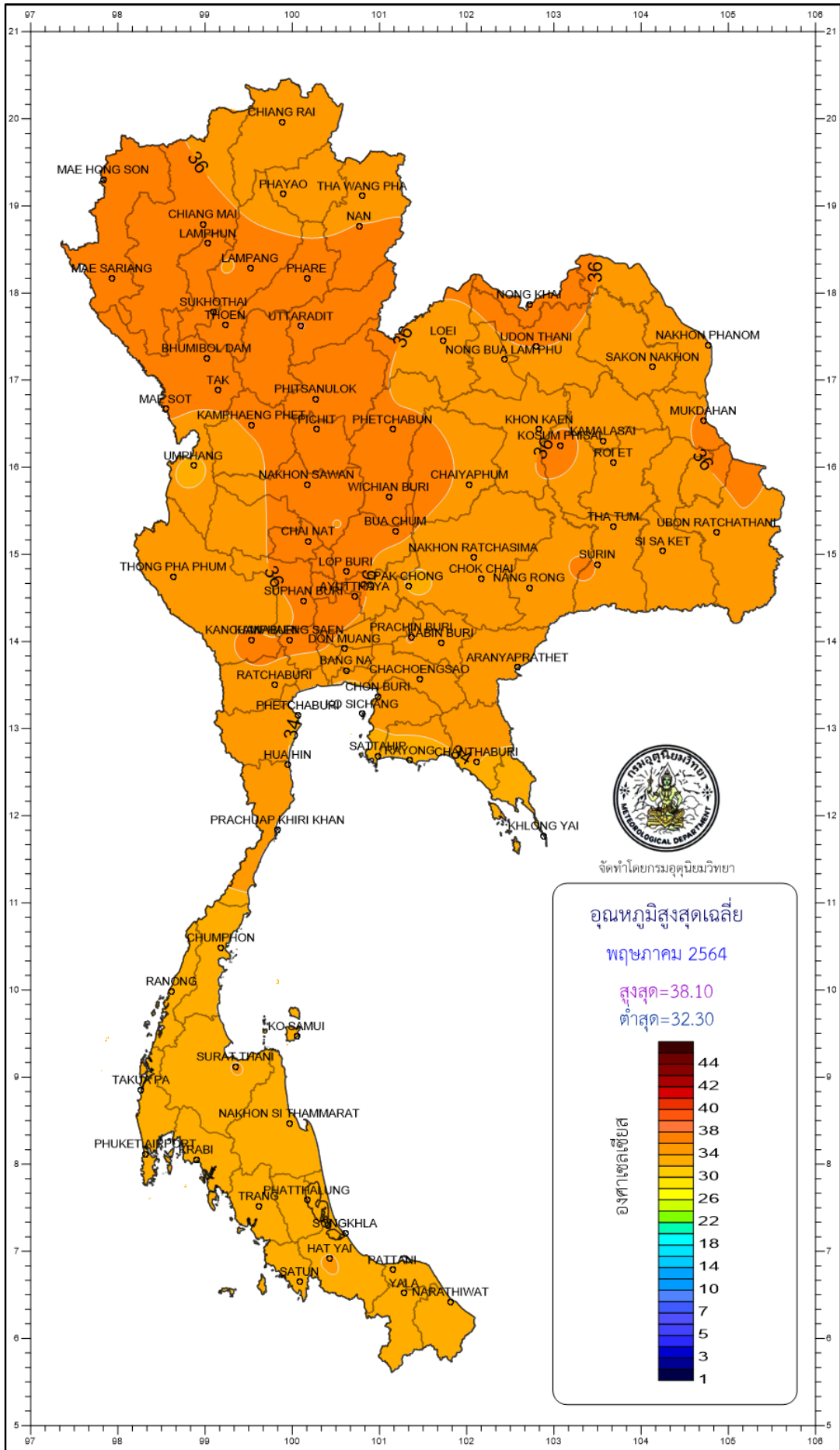
จัดทำโดยกรมอุตุนิยมวิทยา

อุณหภูมิเฉลี่ย
พฤษภาคม 2564
สูงสุด=31.90
ต่ำสุด=26.60



องค์การอนามัยโลก





จัดทำโดยกรมอุตุนิยมวิทยา

